



C.M. TECHNOLOGY

DESIGNED & MANUFACTURED IN
AUSTRALIA

www.cmtechnology.com.au

FULL DATA SHEET

Rev. A

Tel: +61 (2) 9764 5655

BATTERY CHARGER STATION



BC612



A Caspian Technology Company

© All materials presented are trademark & copyright protected by C.M. TECHNOLOGY Pty. Ltd.

**C.M. TECHNOLOGY**DESIGNED & MANUFACTURED IN
AUSTRALIAwww.cmtechnology.com.au

FULL DATA SHEET

Rev. A

Tel: +61 (2) 9764 5655

The BC612 (Fig. 1) is designed as a **charger station**. The charger station is connected to either a PS1240 or PS2024 Battery Manager, expanding the Battery Manager's charging capability to 6 batteries in parallel. Parallel circuit breakers (25A) are integrated providing overload and short circuit protection for each battery.

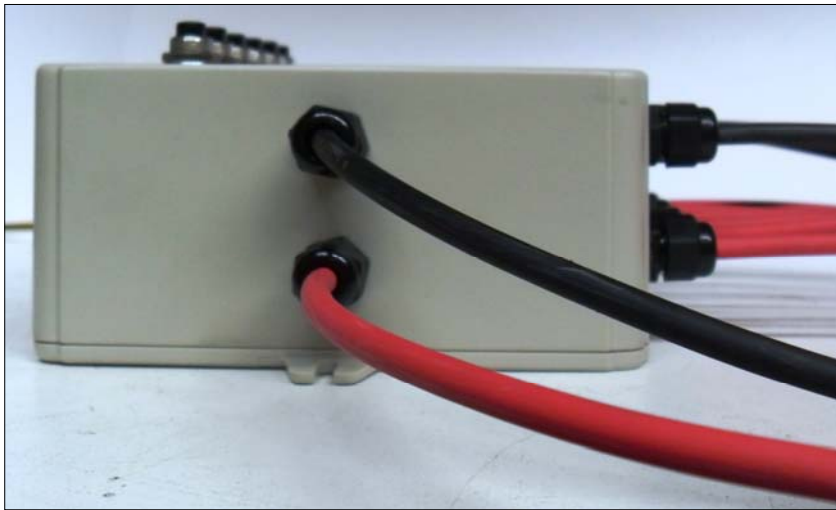


Figure 1: The BC612 Charger Station

In the event of a fault condition triggering the circuit breakers, the BC612 charger station has an easily accessible top panel (Fig. 2), enabling the user to reset each individual circuit breaker.



Figure 2: BC612 Top Panel

A Caspian Technology Company

© All materials presented are trademark & copyright protected by C.M. TECHNOLOGY Pty. Ltd.



C.M. TECHNOLOGY

DESIGNED & MANUFACTURED IN
AUSTRALIA

www.cmtechnology.com.au

FULL DATA SHEET

Rev. A

Tel: +61 (2) 9764 5655

1.0: General Information:

The BC612 is enclosed in a durable beige ABS plastic enclosure (Fig. 3) 200mm (length) by 150mm (width) by 70mm (height).



Figure 3: BC612 Enclosure



Figure 4: Mounting Flange

2.0: Mounting:

The BC612 is not waterproof and a suitable layout should be considered during installation. Do not mount in engine bays or next to exhaust stacks that radiate heat.

The mounting base consists of two mounting flanges (Fig. 4), suitable for \varnothing 7 mm screws. In order to ensure quick multiple battery changeover, the BC612 is designed to be affixed to a flat surface.

The input to the charger station is through two \varnothing 8mm ring terminals (Fig. 5). Output consists of 6 pairs of insulated electrical leads (Fig. 6) terminated by alligator clips (Fig. 7).



Figure 5: Input Ring Terminals





C.M. TECHNOLOGY

DESIGNED & MANUFACTURED IN
AUSTRALIA

www.cmtechnology.com.au

FULL DATA SHEET

Rev. A

Tel: +61 (2) 9764 5655



Figure 7: Output Electrical Leads



Figure 8: Alligator Clips

The input ring terminals are appropriate for use with the PS1240 and PS2024 Battery Managers (Fig. 9).



Figure 9: PS1240 Terminal Assembly

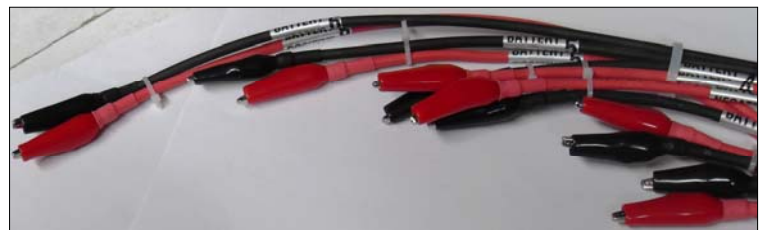


Figure 10: Lead Pairs

Each pair of leads is a different length (Fig. 10), from Battery 1 (shortest lead) through to Battery 6 (longest lead), allowing for easy connection of batteries in a row (Fig 11).

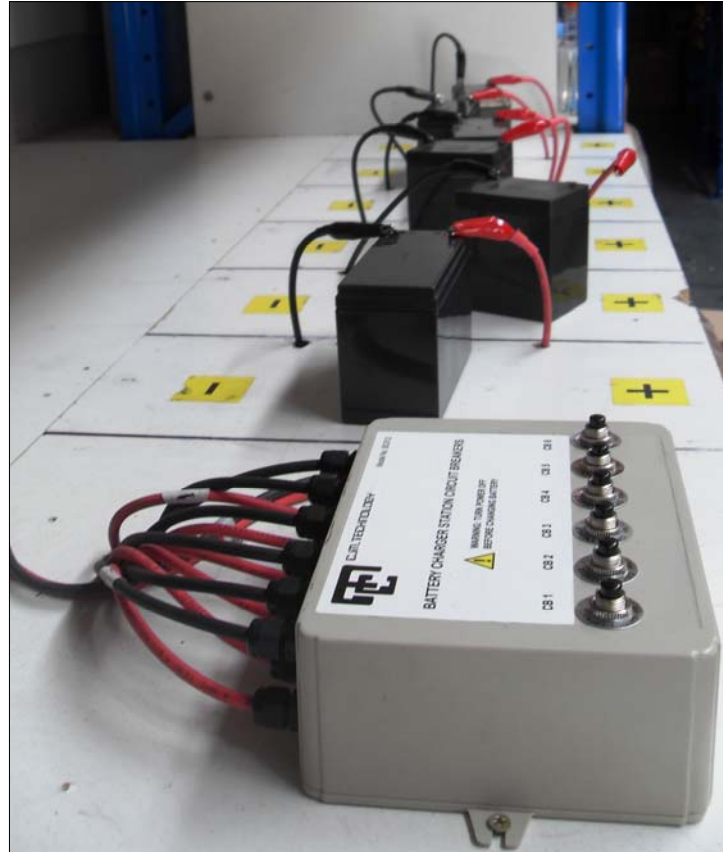
A Caspian Technology Company

© All materials presented are trademark & copyright protected by C.M. TECHNOLOGY Pty. Ltd.

**C.M. TECHNOLOGY**DESIGNED & MANUFACTURED IN
AUSTRALIAwww.cmtechnology.com.au**FULL DATA SHEET**

Rev. A

Tel: +61 (2) 9764 5655

**Figure 11: Charger Station & 6 Identical Batteries (Side View)****Figure 12: Charger Station & 5 Identical Batteries (Front View)****A Caspian Technology Company**

© All materials presented are trademark & copyright protected by C.M. TECHNOLOGY Pty. Ltd.



C.M. TECHNOLOGY

DESIGNED & MANUFACTURED IN
AUSTRALIA

www.cmtechnology.com.au

FULL DATA SHEET

Rev. A

Tel: +61 (2) 9764 5655

3.0: Installation:

The BC612 can be installed in various configurations to suit space constraints, Consideration of different battery dimensions will allow for multiple battery configurations (Fig. 13).

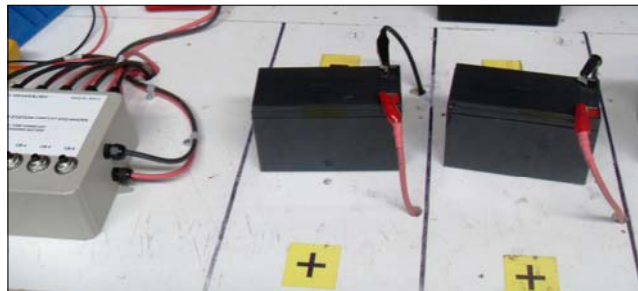


Figure 13: Charger Station & 2 Identical Batteries (Front View)

Do Not Charge Different Battery Types at the Same Time

3.1: Suggested Layouts:

Two different charger station layouts are presented for reference (Fig. 14 - 19).

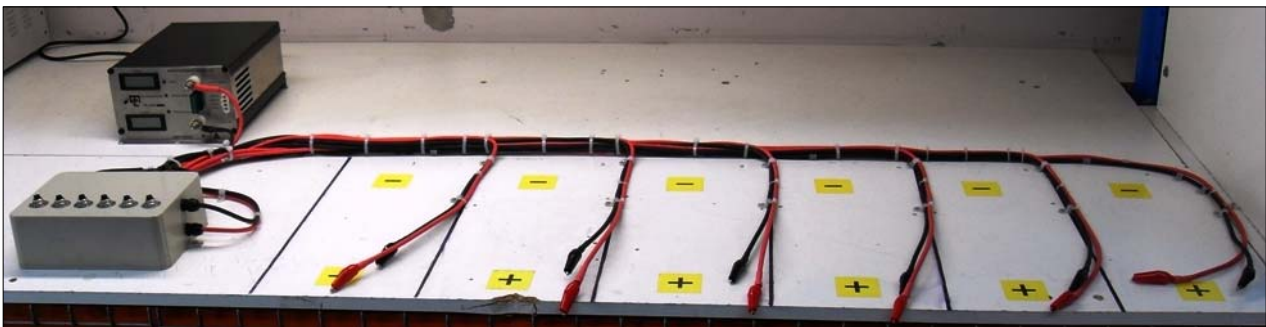


Figure 14: Charger Station Reference Layout 1 (Front View)

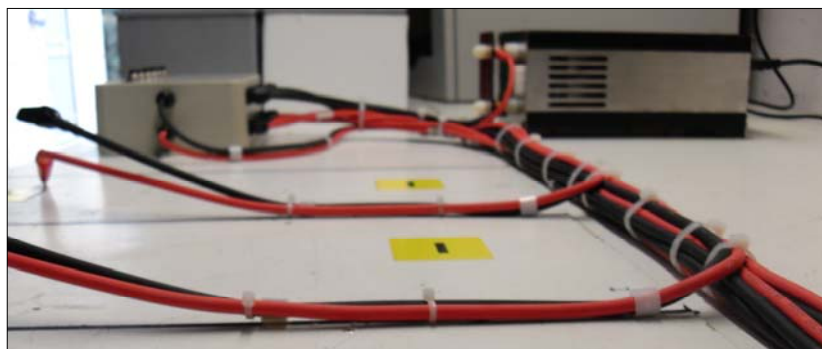


Figure 15: Charger Station Reference Layout 1 (Detail)

A Caspian Technology Company

© All materials presented are trademark & copyright protected by C.M. TECHNOLOGY Pty. Ltd.



C.M. TECHNOLOGY

DESIGNED & MANUFACTURED IN
AUSTRALIA

www.cmtechnology.com.au

FULL DATA SHEET

Rev. A

Tel: +61 (2) 9764 5655



Figure 16: Charger Station Reference Layout 2 (Front View)



**Figure 17: Charger Station
Reference Layout 2 (Detail)**



**Figure 18: Charger Station
Reference Layout 2 (Detail)**



**Figure 19: Charger Station
Reference Layout 2 (Detail)**



A Caspian Technology Company

© All materials presented are trademark & copyright protected by C.M. TECHNOLOGY Pty. Ltd.


C.M. TECHNOLOGY

 DESIGNED & MANUFACTURED IN
 AUSTRALIA

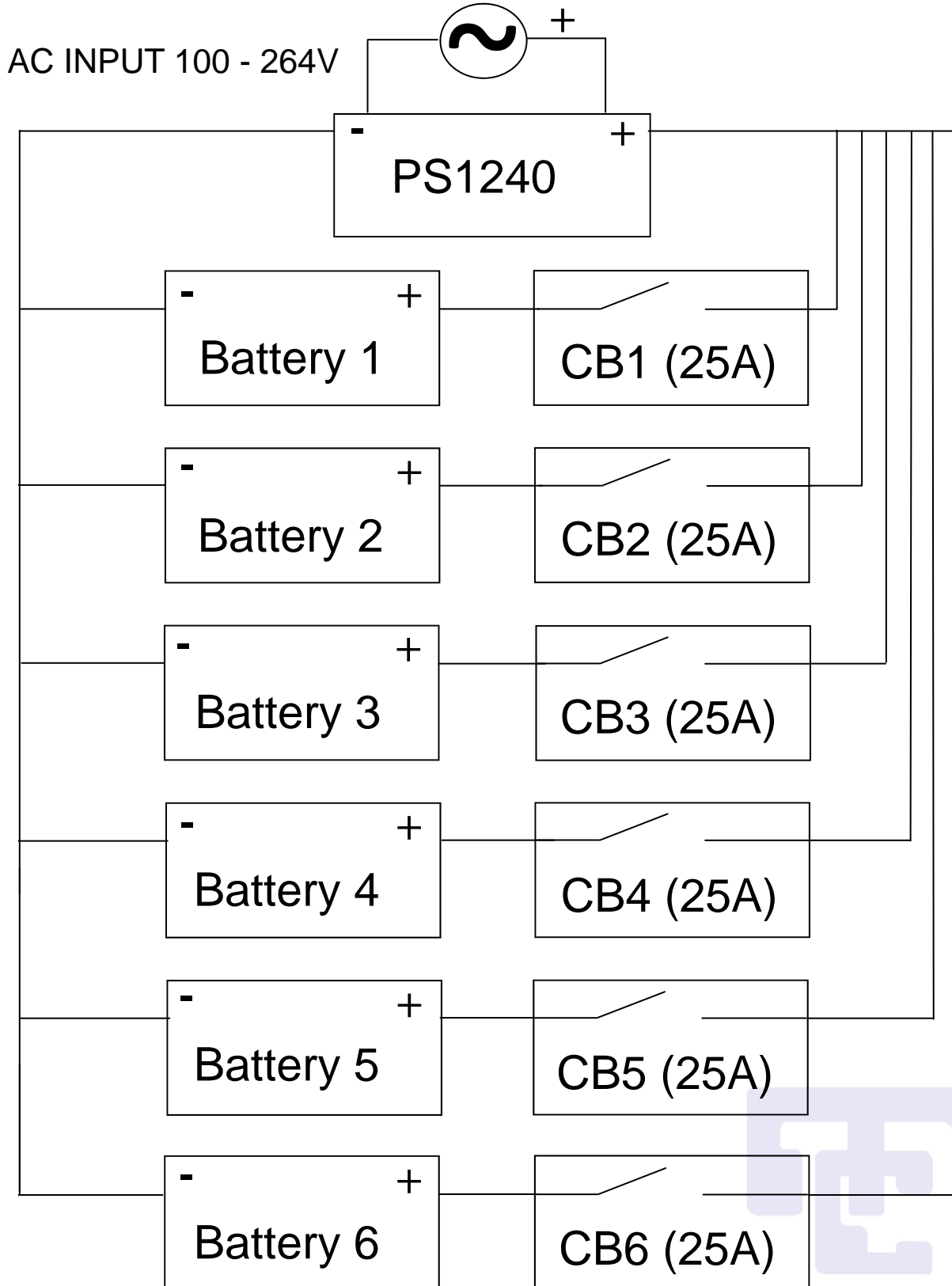
www.cmtechnology.com.au

FULL DATA SHEET

Rev. A

Tel: +61 (2) 9764 5655

4.0: Installation:



A Caspian Technology Company

© All materials presented are trademark & copyright protected by C.M. TECHNOLOGY Pty. Ltd.

**C.M. TECHNOLOGY**DESIGNED & MANUFACTURED IN
AUSTRALIAwww.cmtechnology.com.au

FULL DATA SHEET

Rev. A

Tel: +61 (2) 9764 5655

5.0: Warranty:

Within warranty (12 months) return to factory freight paid applies. The unit will be returned freight paid. Outside warranty, the units can be returned freight paid to the factory for maintenance for a fixed fee + freight (if the unit is in good mechanical condition).

6.0: Additional Information:

The BC612 may be built to order with different sized circuit breakers. Please advise our staff at the time of placing an order.

**A Caspian Technology Company**

© All materials presented are trademark & copyright protected by C.M. TECHNOLOGY Pty. Ltd.