

C.M. TECHNOLOGY

Designed and Manufactured in Australia

[www.cmtechnology.com.au](http://www.cmtechnology.com.au)

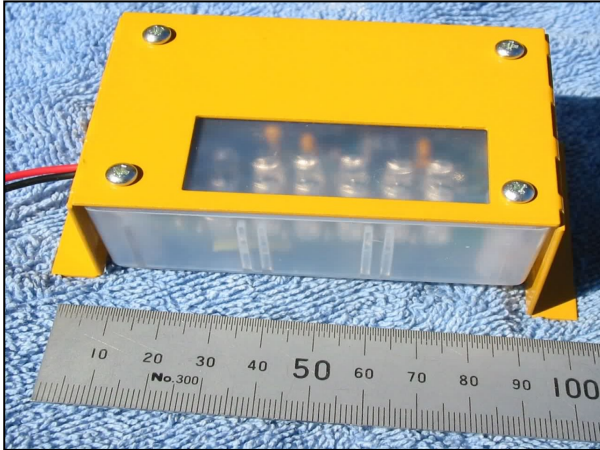
## PRODUCT SHORTFORM

Rev. A1

Tel: +61 (2) 9764 5655

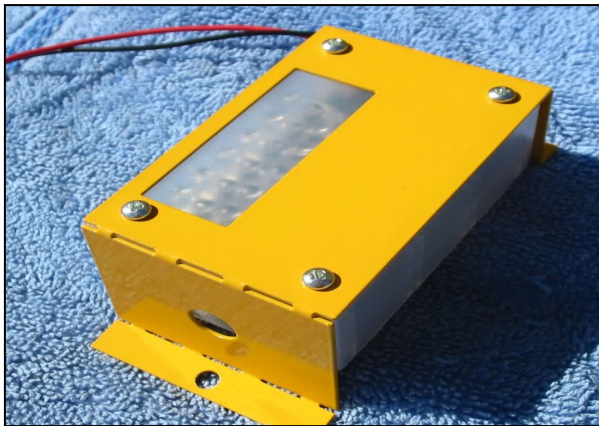
# EMERGENCY VEHICLE LOCKER

## LIGHT



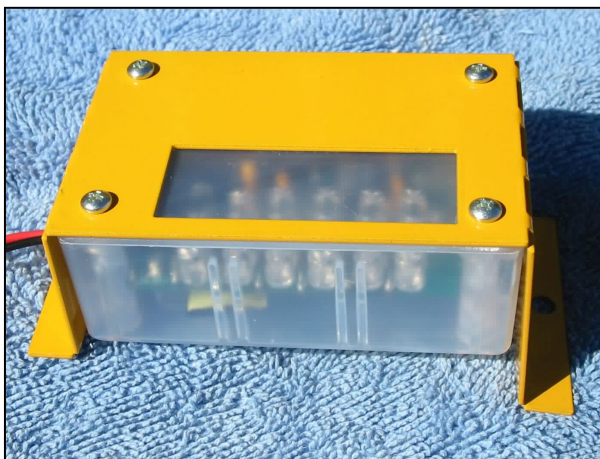
The C.M. Technology Locker light is a new concept in concealed lighting. A string of 18 very high brightness white LEDs are controlled by an infrared body heat detector.

While the detector senses a human body (through the end circular window), the light stays on constantly. When the human moves away or the locker door is shut, then 20 seconds later the LEDs turn off.



This sophisticated electronic control eliminates the mechanical switch normally found in such installations. Such switches are unreliable at best and have been known to flatten the main vehicle battery if they should remain on with the locker door shut.

**Current Draw.** The 12 volt locker light draws ~0.2 amps when on and <0.02 amps when off. The 24 volt light draws ~0.1 amp when on (28 volts applied) and <0.02 amps when off.



**Construction.** The metal case is made of laser cut 1mm galvanized steel, powder coated. The electronics are housed in a translucent plastic case. Two mounting holes are provided in the end flaps. The infra red body heat sensor is under the round hole in the end

**A Caspian Technology Company**

© All materials presented are Trademarked and Copyright of C.M. TECHNOLOGY Pty Ltd